

360

PRIVATE VILLAS

VILLA CASARA

TRADITIONAL & UNIQUE | TRADITIONAL PORTUGAL



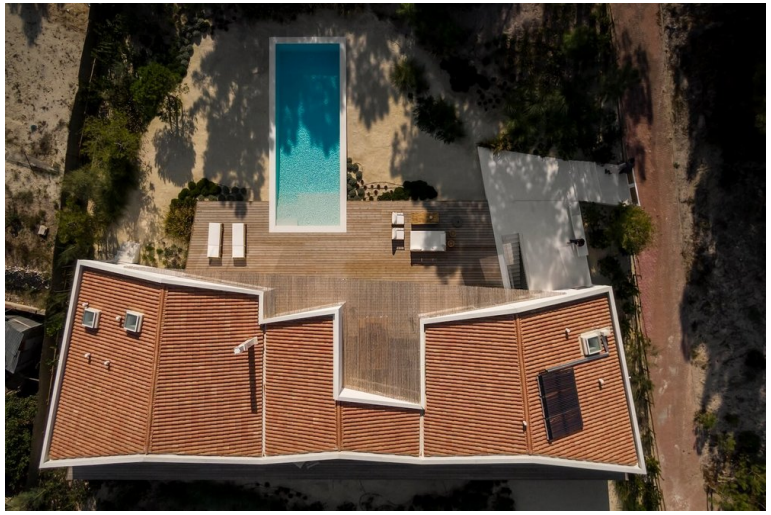
3 Bedrooms

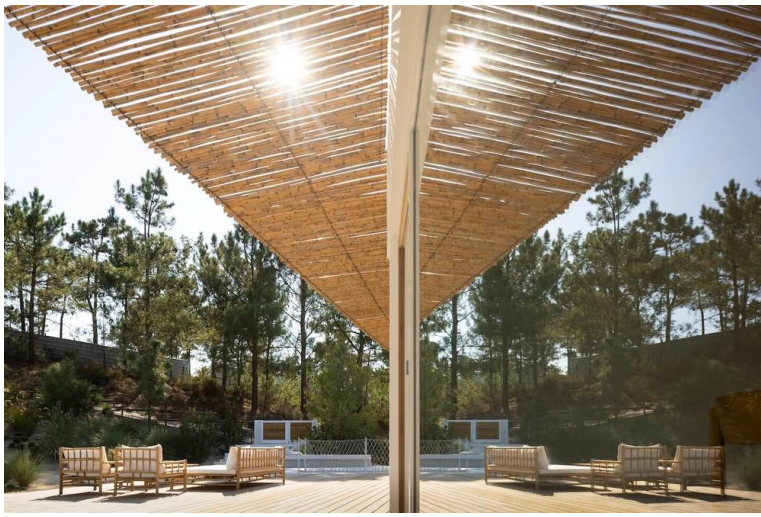


6 Guests



POA





- > Air Conditioning
- > Beach within 10 minute walk
- > Chef service available
- > Heatable Pool
- > Near shops/restaurants
- > Near the beach
- > With WIFI

"A modern, minimalist villa with a heated pool, walking distance of Pego beach in Comporta."

Designed by Portuguese architect Falcão de Campos, the villa features panoramic windows all around and super modern minimalist interiors. To one side, the large glass windows open onto a suspended decked terrace overlooking rural fields over which you can also enjoy spectacular ocean sunsets and extended views all the way to the Serra da Arrábida coastline. To the other side, nestled between the villa and sand dunes and framed by pine trees, sits a totally private, large heated swimming pool which in turn is surrounded by a decked terrace for chilling-out and outdoor dining. The grounds total 1400 m².

The house has been conceived to welcome guests with all interiors to exteriors windows/doors featuring special child-safe locks. There are 3 suites plus a mezzanine level for an extra guest. From the bathtub of the master bedroom suite you can also enjoy those wonderful sunsets that Comporta is famous for – perhaps after a long “tough” day at the beach! All the bedrooms have access onto the suspended terrace whilst the dining room opens both ways, to either the pool decked area or the suspended terrace.

As well as extensive use of Riga wood, other stylish design features such as two Spanish chairs from Fredericia, J39 dining chairs from Fredericia, extra soft sofa from Living Divani, lighting by Davide Groppi and Flos, fully equipped kitchen by Miele and Smeg, beds and filmmaker chairs designed by Álvaro Siza Vieira, which complete the look of this unique villa. A special added touch by the owners wanting guests to enjoy the best Portugal has to offer, is the honesty bar with a “wine and olive oil selection from the Douro and Alentejo” to choose from.

The property is suitable for rentals all year round and is equipped with central heating/air conditioning, ceiling fans in the bedrooms and underfloor heating in the bathrooms. There is also a feature fireplace in the living room. Running alongside, a path leads you to the beach only 7 minutes walk away – this is also the main access to Praia do Pego, popular during summer days but otherwise pretty quiet. Comporta village with its hippy-chic atmosphere is located 14 kms drive away.

WARNING NOTES: Due to unprotected exterior staircases, garden levels and pool surrounds, young children must be supervised. However, all indoor to exterior accesses have child safety locks.

Swimming pool (12 x 4.8 metres with Roman steps, shallow-end 1.10 metres & deep-end 2 metres); pool heating included

There are 2 adults' bikes available for guests to use

ACCOMMODATION

Steps up from road access level to a large, decked pool terrace with outdoor dining area. There is also a pathway up to the same terrace, ideal for when walking back from the beach

Pool shower/guest WC with direct access into the villa

Master bedroom suite (bed size 200x180cms), full bathroom with separate shower

Large fully equipped Miele/Smeg kitchen with central work island

Dining Room opening to both the suspended terrace and outdoor dining terrace

Living/TV room with open feature fireplace and Apple TV

Twin/double bedroom suite (2 beds sizes 200x90cms each) with shower bathroom and extra mezzanine level (bed size 200x90cms)

Double bedroom suite (bed size 200x180 cms) with shower bathroom

All bedrooms have light blocking blinds and all shower bathrooms have rain showers