

# VILLA LES PARCS

TRADITIONAL & UNIQUE | TRADITIONAL FRANCE



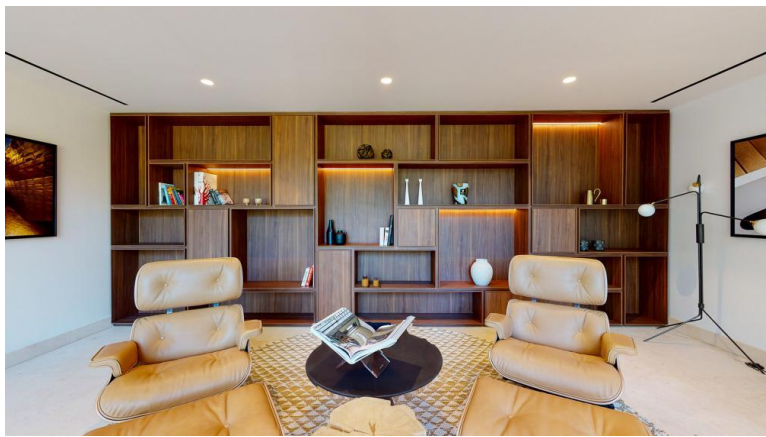
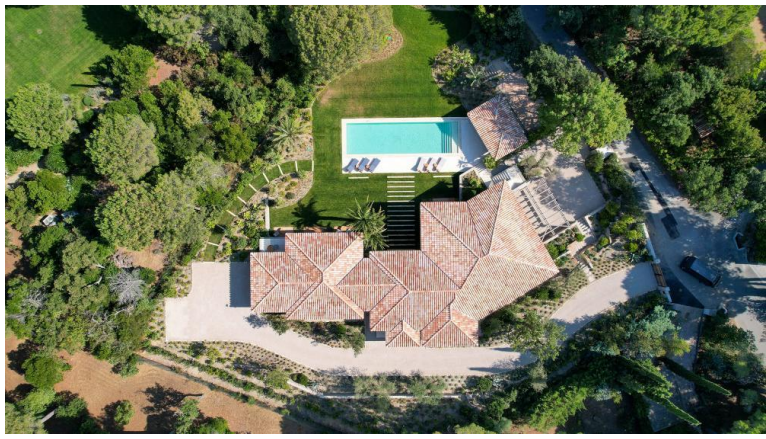
**5 Bedrooms**



**10 Guests**



**£147,730**



- > Air Conditioning
- > Chef service available
- > Family villa
- > Gym
- > Near shops/restaurants
- > Near the beach
- > With seaviews
- > With WIFI

"Plunged in lush Mediterranean gardens within the exclusive Domaine Les Parcs on the St Tropez peninsula, this 5-bedroom modern villa is designed for luxury living on the French Riviera and equipped with the ultimate relaxation and entertainment facilities such as sauna, hammam, heatable pool, games room, home theatre, gym and much more!"

## ACCOMMODATION

(600 m<sup>2</sup>)

### **Ground floor (entry level):**

Large open plan living and dining area with kitchen (for your chefs or your convenience there is an elevator which connects this with the industrial kitchen below), door to balcony with an outside dining and living area overlooking the pool with plenty of outside lounge seating.

Bedroom 1: Master bedroom suite, en suite bathroom, sitting area and office area.

### **Garden level:**

Seating area/ lounge for reading or relaxing.

Bedroom 2: Family suite with 1 double bedroom and bunk room (for children) en suite bathroom, door to pool area and garden.

Bedroom 3: en suite bathroom, door to pool area and garden.

Bedroom 4: en suite bathroom, door to pool area and garden.

Bedroom 5: en suite bathroom, door to pool area and garden.

Professional kitchen with a large oven & hob, double sinks, large fridge freezer, and a storage room.

### **Lower level:**

2 staff/ teenager bedrooms with shower rooms and toilets.

Cinema/ TV area and bar/ games area.

Full fitness health area with hammam and sauna and sporting equipment.

### **Grounds:**

This villa boasts wonderful Mediterranean gardens with ample lawn areas. Private heatable pool (Roman steps), pool house with fridge and BBQ. Comfortable loungers by the pool and large lounging areas on the main terrace on the entry level. Plenty of private parking at the front and a second entrance at the garage useful for staff.

## DISTANCES

St Tropez: 4 km.

Canoubiers Beach: 2 km.

Salins Plage: 3 km.

Pampelonne Beach: 6 km.

Nice Airport: 116 km.

A8 Motorway: 46 km.