

# 360

PRIVATE VILLAS

## VILLA ALTESSE

TRADITIONAL & UNIQUE | TRADITIONAL FRANCE



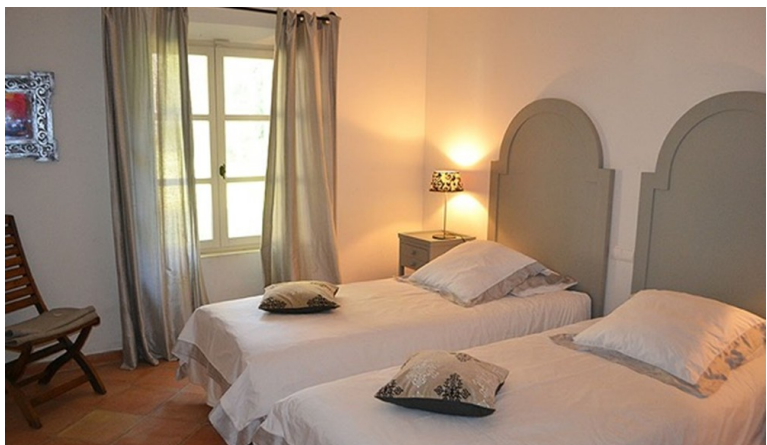
**5 Bedrooms**



**10 Guests**



**£11595 - £17340 / week**



- > Air Conditioning
- > Beach within 10 minute walk
- > Chef service available
- > Family villa
- > Heatable Pool
- > Near shops/restaurants
- > Near the beach
- > With WIFI

"A beautiful family villa with five spacious bedrooms and five bathrooms. The villa is set in a peaceful garden with heated pool just 700 metres walk onto Gigaro Beach."

The property is all on one level apart from a mezzanine office above the living room and offers five bedrooms, all with fans and each with it's own bathroom or shower room. There's a huge high ceiling living room, dining room and modern well equipped kitchen.

Outdoors, the villa is fringed by a covered outdoor dining terrace with gas barbecue, teak table and chairs and comfy sitting area. The garden is very private and consists of flat lawns leading down to a fabulous 11m x 5m swimming pool with shallow and deep ends which can be heated. The villa is located in a peaceful and very private residential area between the villages of Ramatuelle and La Croix Valmer. At the bottom of the garden is a gate and private path which leads directly to Gigaro beach just 700 metres away.

Gigaro is a beautiful white sand beach fringed by several local restaurants and bars and accessed by a quiet no-through road. From here it is a 5 minute drive to the village of La Croix Valmer and 15 minutes into St Tropez.

**Accommodation:**

House Size: 300 m2

**Ground Floor:**

Bathroom 1 - ensuite bathroom including Toilet, Bath Without Shower, Shower Enclosure.

Bathroom 2 - ensuite bathroom including Toilet, Bath Without Shower, Shower Enclosure.

Bathroom 3 - ensuite bathroom including Toilet, Shower Enclosure

Bathroom 4 - ensuite bathroom including Toilet, Shower Enclosure

Bathroom 5 - ensuite bathroom including Toilet, Shower Enclosure

Kitchen - Fully equipped with Gaggenau gas hotplates, conventional and microwave oven, dishwasher, fridge/freezer. Breakfast table for 4 guests

Living Room - Spacious and high beamed ceiling. With fireplace, comfortable sofas, flat screen plasma TV.

Direct access to terrace

Dining Room - leading from kitchen, with table and chairs for 6 guests

Bedroom 1 - 1 Large Double Bed, with ensuite bathroom .

Bedroom 2 - 1 Large Double Bed, with ensuite bathroom

Bedroom 3 - 1 Large Double Bed, with ensuite bathroom

Bedroom 4 - 1 Large Double Bed, with ensuite bathroom

Bedroom 5 - 2 Single Beds, with ensuite bathroom.

**1st Floor:**

Office - mezzanine office area accessed from the living room.