

# 360

PRIVATE VILLAS

## VILLA VENERE

CROATIA | SPLIT



**5 Bedrooms**

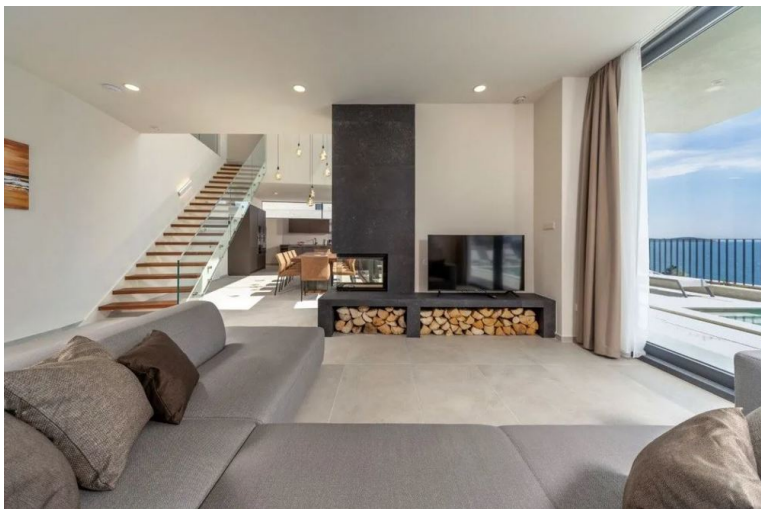


**10 Guests**



**£6180 - £13925 / week**





- > Air Conditioning
- > Beach within 10 minute walk
- > Family villa
- > Gym
- > Infinity Pool
- > Near shops/restaurants
- > Near the airport
- > Near the beach
- > With seaviews
- > With WIFI

"Set in a quiet residential area on the edge of Rogoznica, along the Split Riviera, this contemporary villa with salt-water, infinity pool, gym and sauna is one of three luxury, seafront villas designed to enjoy the outdoor space and magnificent scenery of the Dalmatian coast".

The town of Rogoznica is ideally positioned for exploring the neighbouring towns of Primosten, Trogir and Sibenik, or even Split while the Kornati and Krka National Parks are within easy reach. If you imagine your ideal vacation in complete privacy away from the town's bustle, within quiet surroundings, and right on the sea – this property is for you. The fantastic sea view and the calming Mediterranean scents will complement your holiday in Croatia. Designed and finished to the highest standard, this villa offers five bedrooms for ten guests and is ideal for a group of friends getting together or for a family vacation.

#### ACCOMMODATION

(395 m2)

##### **Ground floor:**

Modern, well-equipped kitchen and dining area.

Living area with a fireplace, TV, door to terrace.

1 Double bedroom, TV, en suite bathroom, door to pool terrace.

Guest's toilet.

Laundry room.

##### **First floor:**

4 Double bedrooms, TV, en suite bathrooms, sea views.

##### **Lower ground floor:**

Private gym, sauna, table football.

##### **Grounds:**

Large private terrace with sea views. Private infinity, salt-water 40 m2 pool (Roman steps; hydromassage jets), outdoor shower, sea views. Pool terrace with lounge area, al fresco dining area with BBQ. Private parking.

#### DISTANCES

Sea: 10 metres.

Nearest towns: Rogoznica 2 km

Primosten: 8 km.

Sibenik 30 km.

Restaurant: 600 metres.

Shop: 2 km.

Split airport: 35 km.

Split ferry port: 50 km.

Marina Frapa: 5 km.